



ಬೃಹತ್ ಬೆಂಗಳೂರು ಮಹಾನಗರ ಪಾಲಿಕೆ  
Bruhat Bengaluru Mahanagara Palike



# BBMP COVID-19 WAR ROOM 21.09.2022



# OVERVIEW OF COVID-19 IN BENGALURU



## CASE TRENDS

ACTIVE CASES **2,282**

### Confirmed Cases

**205**

18,70,679 #

### Recovered Cases

**289**

18,51,410 #

### Death Cases

**0**

16,987 #



## HOSPITALIZATION

**52**

### ICU – V

-

### ICU

**20**

### HDU

**7**

### General

**25**

INCLUDES GOVT. QUOTA AND PRIVATE WALK-IN HOSPITALIZATION



## VACCINATION

**1,351**

2,04,33,442 #

### First Dose

**67**

96,72,907 #

### Second Dose

**120**

94,67,580 #

### Precaution Dose

**1,164**

12,92,955 #



## TRIAGING

### MTU

**7**

### Tele Triage

**180**



## ACTIVE CLUSTERS

**3**

### Budding Clusters (<5 Cases)

**3**

### Clusters (> 5 cases)

**0**



## TESTING

**12,465**

3,17,66,514 #

### RAT

**2,345**

### RTPCR

**10,120**

Positivity : 1.69%

\*FOR LAST 7 DAYS

# : indicates cumulative numbers till date



# ABSTRACT OF COVID-19 SCENARIO IN BENGALURU

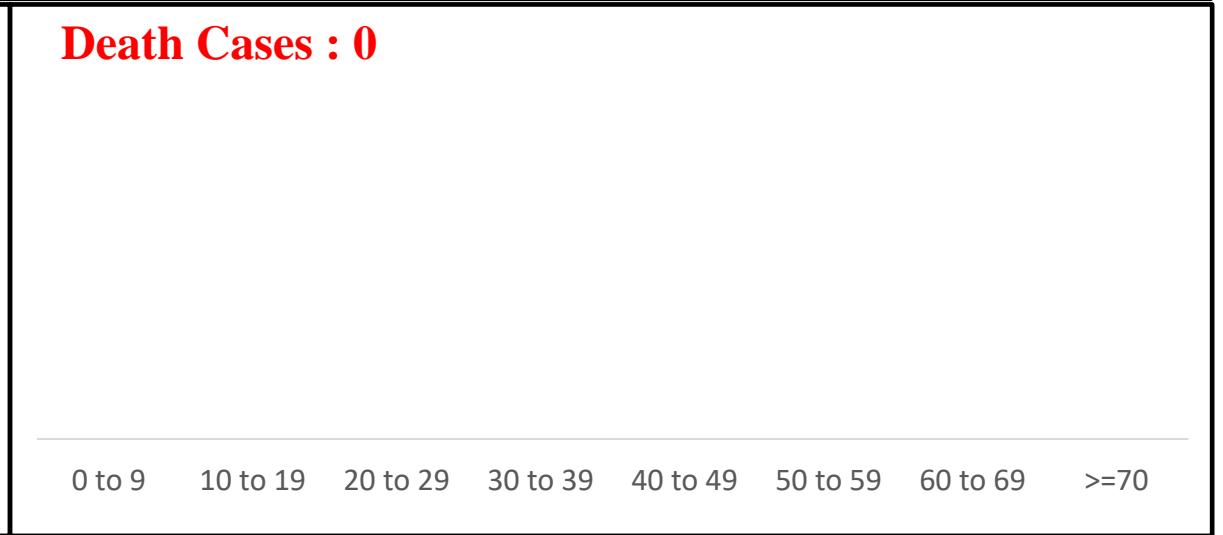
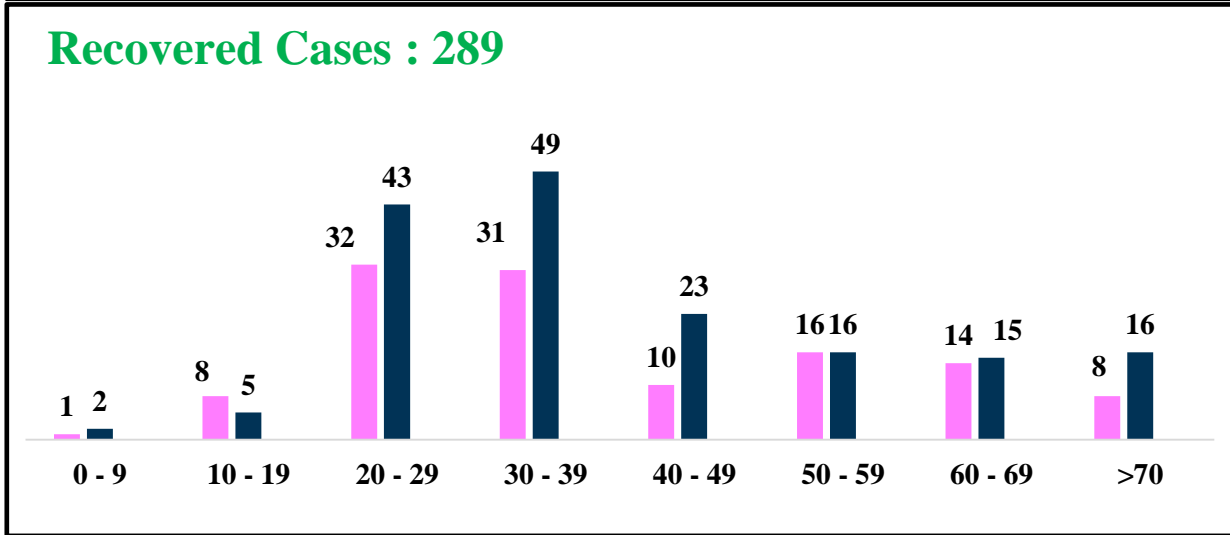
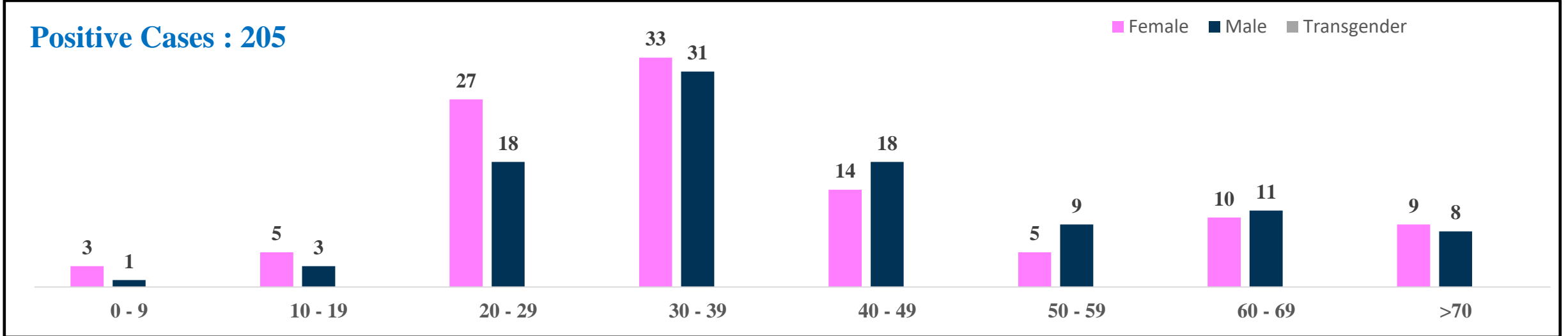


	MALE			FEMALE			TRANSGENDER			TOTAL		
	Last 24 Hours	Last 7 Days	Cumulative	Last 24 Hours	Last 7 Days	Cumulative	Last 24 Hours	Last 7 Days	Cumulative	Last 24 Hours	Last 7 Days	Cumulative
<b>Positive Cases</b>	99	788	11,02,588	106	650	7,67,199	0	0	196	<b>205</b>	<b>1,438</b>	<b>18,70,679</b>
<b>Recovered Cases</b>	169	892	10,90,319	120	658	7,60,997	0	0	187	<b>289</b>	<b>1,550</b>	<b>18,51,410</b>
<b>Death Cases</b>	0	1	10,759	0	0	6,224	0	0	4	<b>0</b>	<b>1</b>	<b>16,987</b>
<b>Total Tests Done</b>	<b>In Last 24 hrs. : 12,465</b>			<b>In last 7 days : 85,121</b>			<b>Cumulative : 3,17,66,514</b>					
<b>Vaccine Doses Administered</b>	<b>In Last 24 hrs. : 1,351</b>			<b>In last 7 days : 21,104</b>			<b>Cumulative : 2,04,33,442</b>					
<b>ACTIVE CASES</b>									<b>2,282</b>			

\*Covid deaths occurred today : 00 | Covid deaths occurred beyond last 24hrs., reported today : 00

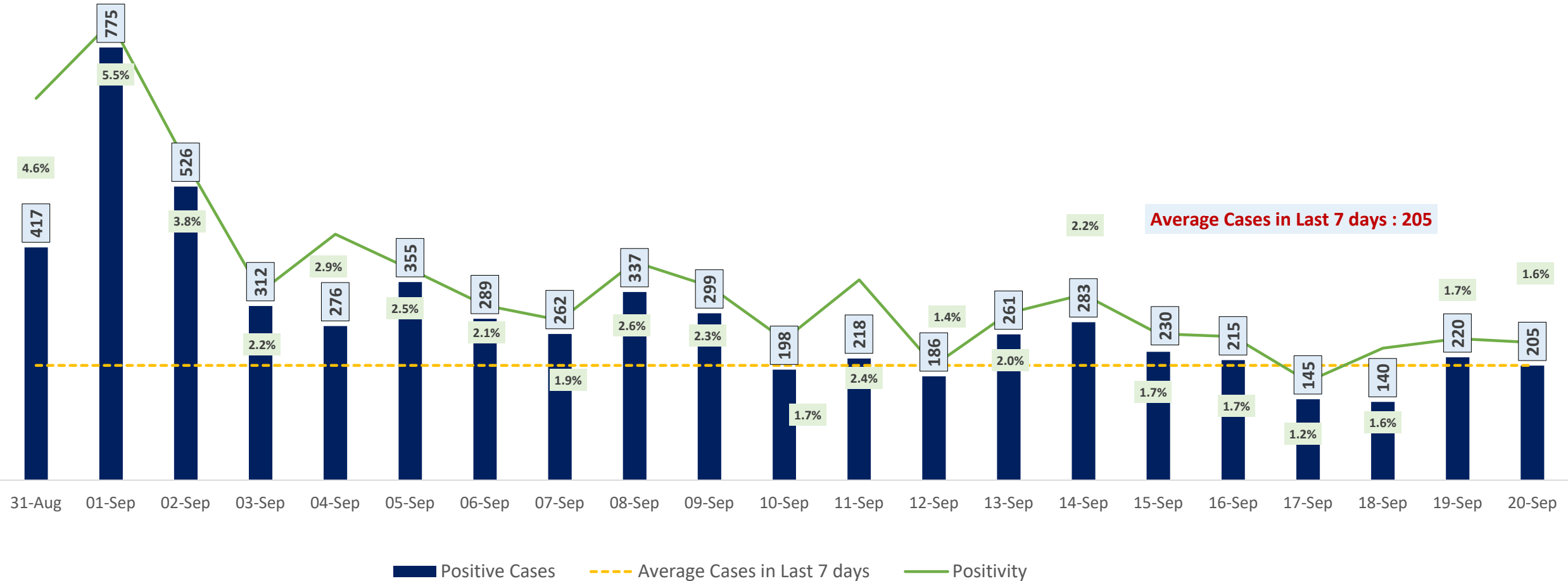


# LAST 24 HOURS AGE GROUP AND GENDER WISE DISTRIBUTION





# POSITIVITY RATE OF BENGALURU – LAST 21 DAYS

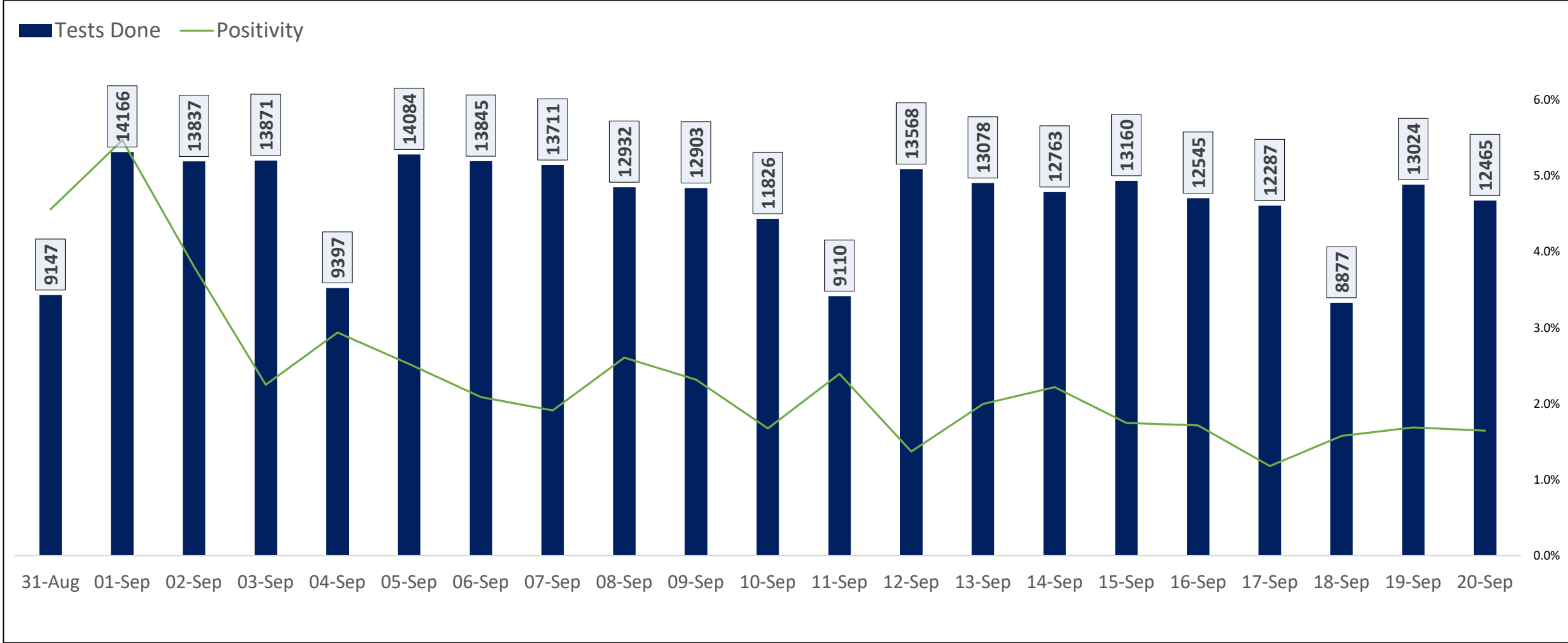




# TESTING TRENDS IN BENGALURU

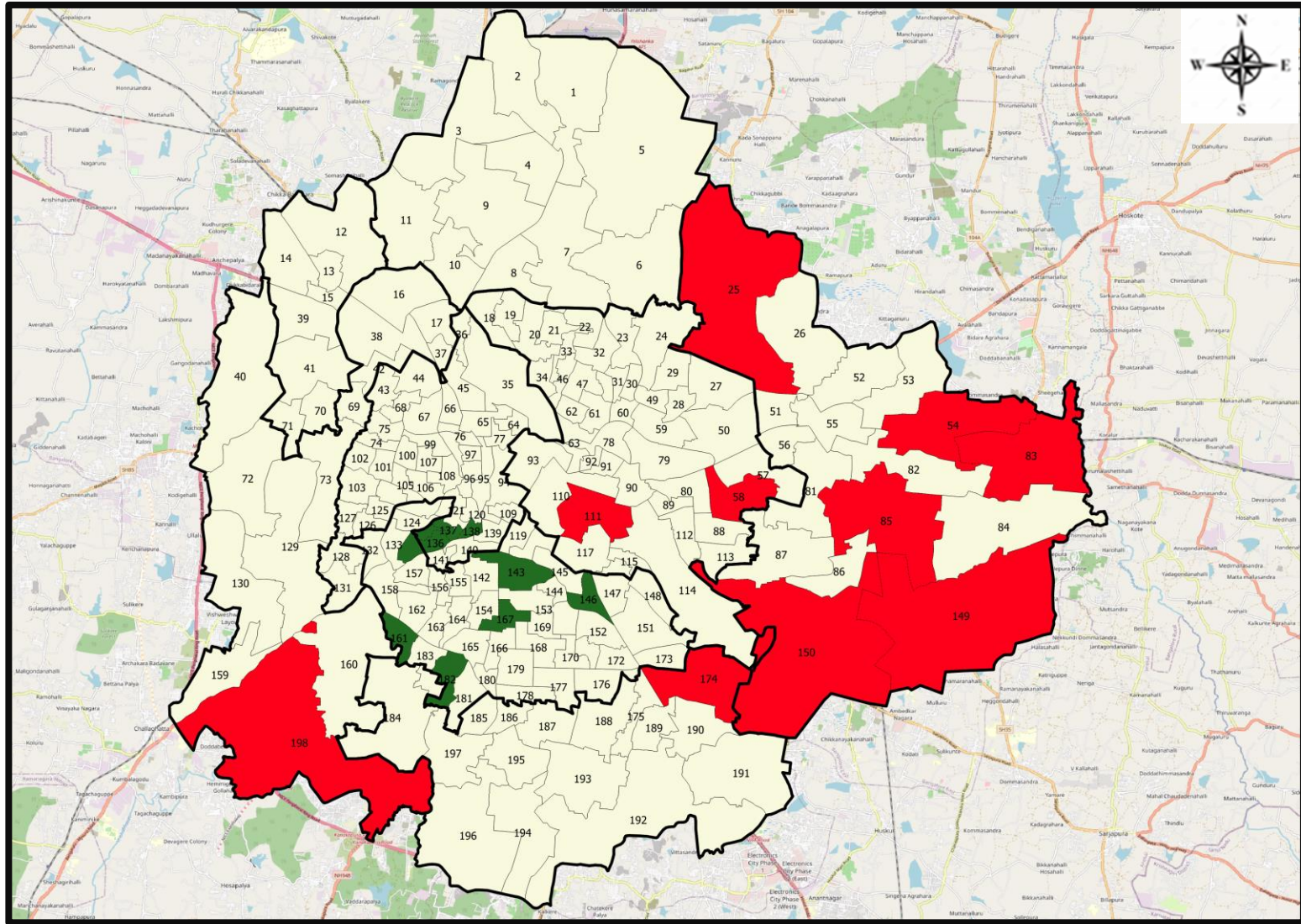


Total Test Conducted Till Date	Test Conducted Last 24 hours	Last 7 Days Average
3,17,66,514	12,465	12,160





# BENGALURU URBAN MAP SHOWING TREND OF POSITIVE CASES IN LAST 7 DAYS



## Top 10 wards reporting highest number of positive cases in last 7 days

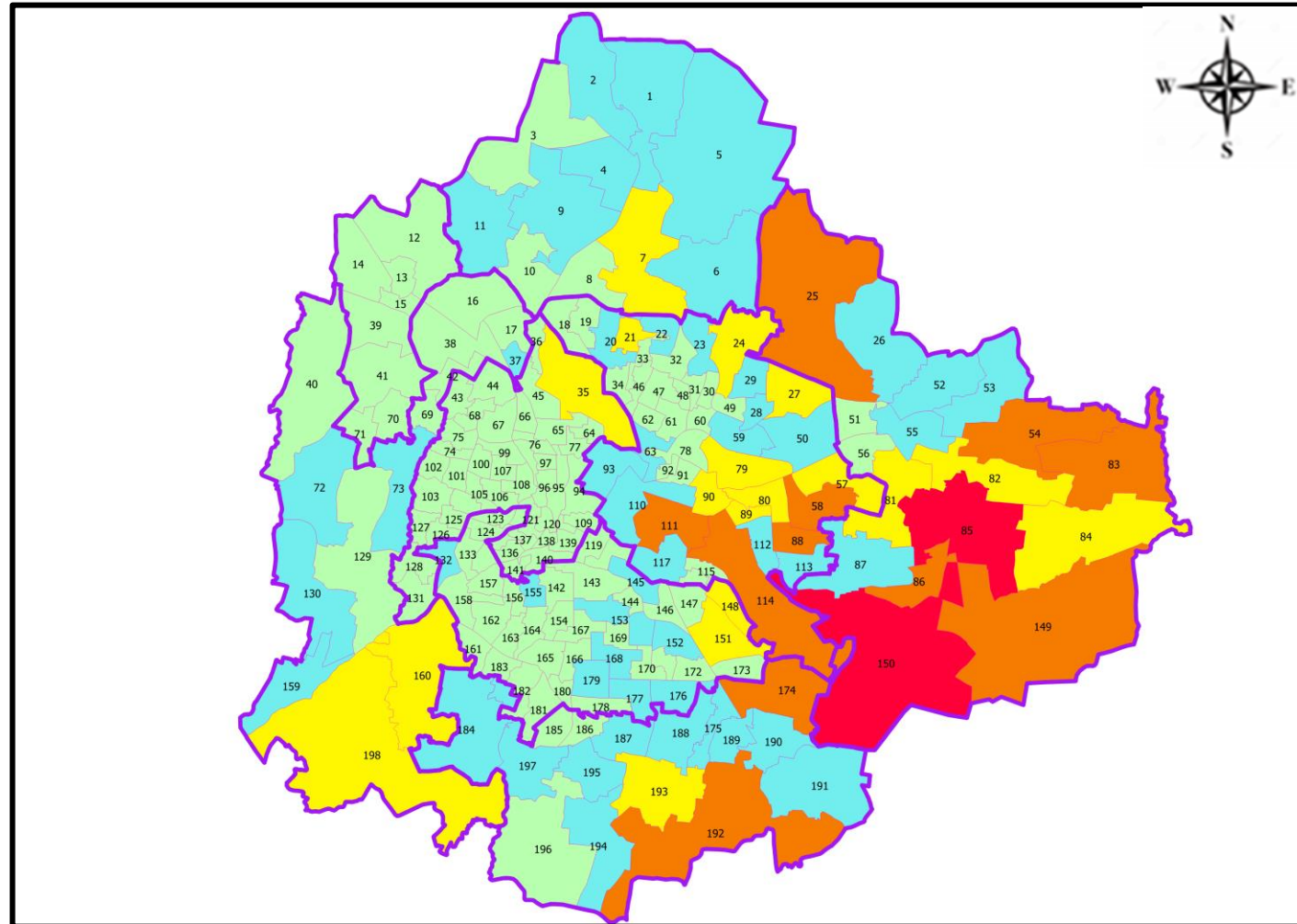
Ward No.	Ward Name	Daily Cases Average
150	Bellanduru	16
85	Dodda Nekkundi	8
83	Kadugodi	6
58	New Tippasandra	6
111	Shantala Nagar	6
25	Horamavu	5
174	HSR Layout	5
198	Hemmigepura	4
149	Varthuru	4
54	Hudi	4







## Top 10 wards reporting least number of positive cases in last 7 days

Ward No.	Ward Name	Daily Cases Average
182	Padmanabha Nagar	0
167	Yediyur	0
161	Hosakerehalli	0
146	Lakkasandra	0
143	Vishveshwara Puram	0
138	Chalavadipalya	0
137	Rayapura	0
136	Jagajivanram Nagar	0
135	Padarayanapura	0
134	Bapuji Nagar	0



# BENGALURU MAP SHOWING INTENSITY OF POSITIVE CASES IN LAST 7 DAYS



-  **Level 1 : 0 to 5 Cases**
-  **Level 2 : 5 to 15 Cases**
-  **Level 3 : 15 to 25 Cases**
-  **Level 4 : 25 to 50 Cases**
-  **Level 5 : More than 50 Cases**
-  **Zone Boundaries**



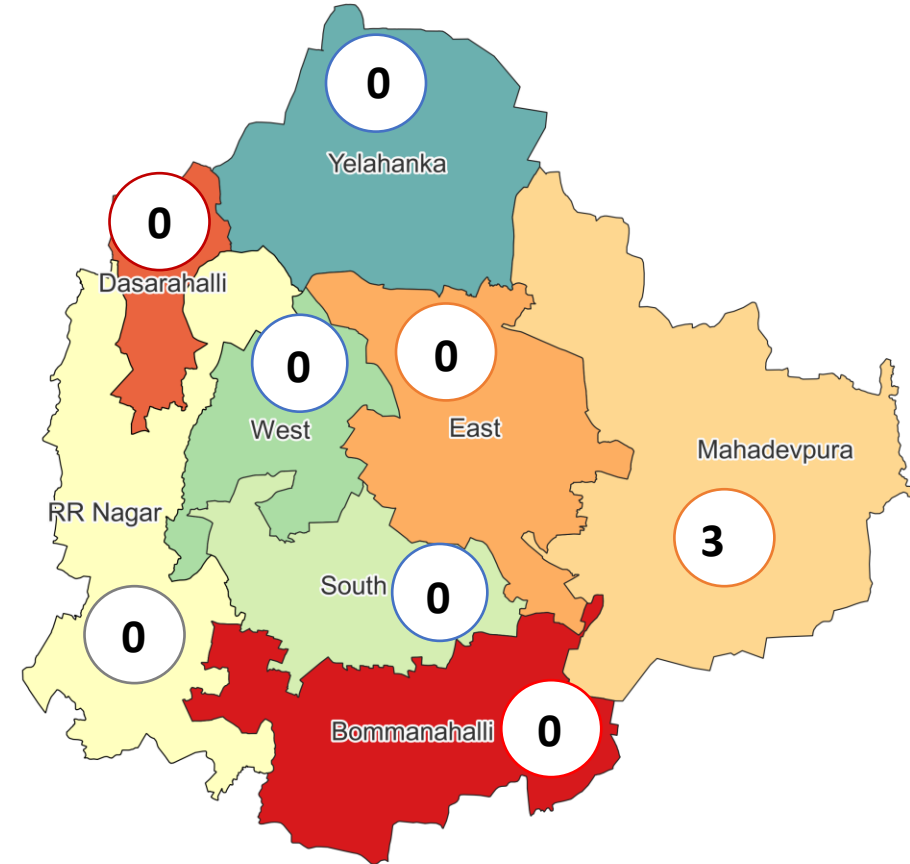


# CLUSTER DETAILS



Zone Name	TOTAL CLUSTERS	Budding Clusters	Clusters	Outbreaks
		Less Than 5 Cases	5 To 14 Cases	More Than 14 Cases
BOMMANAHALLI	0 (-)	0 (-)	0 (-)	0 (-)
DASARAHALLI	0 (-)	0 (-)	0 (-)	0 (-)
EAST	0 (-)	0 (-)	0 (-)	0 (-)
MAHADEVPURA	3 (-)	3 (-)	0 (-)	0 (-)
RR NAGAR	0 (-)	0 (-)	0 (-)	0 (-)
SOUTH	0 (-)	0 (-)	0 (-)	0 (-)
WEST	0 (-)	0 (-)	0 (-)	0 (-)
YELAHANKHA	0 (-)	0 (-)	0 (-)	0 (-)
<b>TOTAL</b>	<b>3 (-)</b>	<b>3 (-)</b>	<b>0 (-)</b>	<b>0 (-)</b>

## Total Active Clusters



### Types of Clusters

Zone Name	Apartments/ Villa	Individual House	Hostels/Quarters	Others	Schools/Colleges
BOMMANAHALLI	0 (-)	0 (-)	0 (-)	0 (-)	0 (-)
DASARAHALLI	0 (-)	0 (-)	0 (-)	0 (-)	0 (-)
EAST	0 (-)	0 (-)	0 (-)	0 (-)	0 (-)
MAHADEVPURA	3 (-)	0 (-)	0 (-)	0 (-)	0 (-)
RR NAGAR	0 (-)	0 (-)	0 (-)	0 (-)	0 (-)
SOUTH	0 (-)	0 (-)	0 (-)	0 (-)	0 (-)
WEST	0 (-)	0 (-)	0 (-)	0 (-)	0 (-)
YELAHANKHA	0 (-)	0 (-)	0 (-)	0 (-)	0 (-)
<b>TOTAL</b>	<b>3 (-)</b>	<b>0 (-)</b>	<b>0 (-)</b>	<b>0 (-)</b>	<b>0 (-)</b>

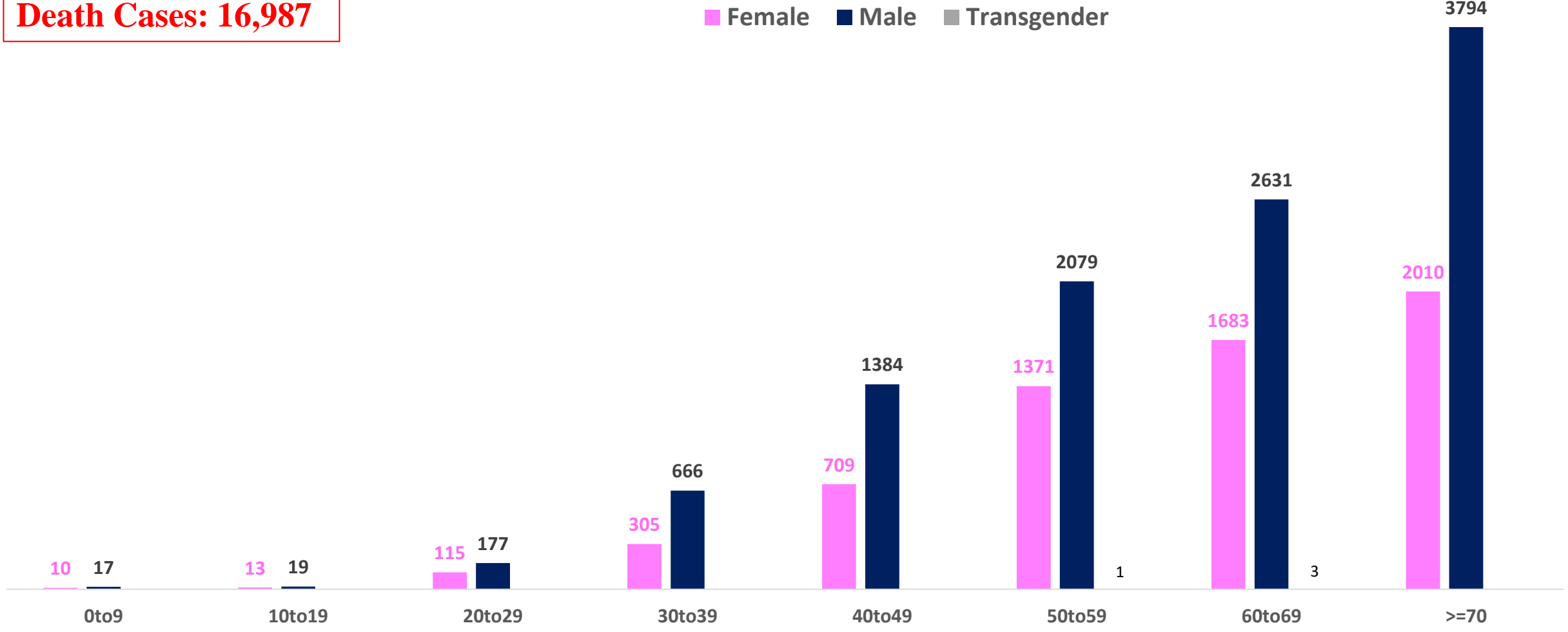
▲▼ : Shows increase and decrease in numbers as compared to previous day



# AGE AND GENDER WISE DISTRIBUTION OF DEATH CASES



**Death Cases: 16,987**





# COVID-19 SCENARIO IN BENGALURU AND OTHER METROPOLITAN CITIES



CITY NAME	Positive Cases	Active Cases	Recovered	Deceased	Vaccine Doses Administered
New Delhi	20,02,452	514	19,75,439	26,499	3,70,81,404
Bengaluru*	18,70,679	2,282	18,51,410	16,987	2,37,08,385
Mumbai	11,48,193	1,009	11,27,459	19,725	2,20,90,958
Chennai	7,89,277	2,346	7,77,862	9,069	1,13,09,111

Source : <https://dashboard.cowin.gov.in/> at 4:20pm (21.09.2022)  
Source : <https://www.covid19bharat.org/> at 4:20pm(21.09.2022)

\*includes BBMP & Bengaluru Urban



# SNAPSHOT OF COVID-19 CASES IN BENGALURU URBAN



**Total Wards With  
< =10 Cases\* :  
146**

**Tests Conducted  
on 20.09.2022:  
12,465**

**Recovery  
Rate\*:  
98.97%**

**Total  
Active Cases :  
2,282**

**Total Vaccinated  
on 20.09.2022:  
1,351**

**Positivity  
Rate\* :  
1.69%**

**Active  
Rate\*:  
0.12%**

**Case  
Fatality Rate\* :  
0.07%**





\*Total positive cases In the past 7 days

\*CFR and positivity is for Past 7 days



ಬೃಹತ್ ಬೆಂಗಳೂರು ಮಹಾನಗರ ಪಾಲಿಕೆ  
Bruhat Bengaluru Mahanagara Palike



<b>Download BBMP Bulletin</b>	<a href="https://apps.bbmpgov.in/covid19/mediabulletin.php">https://apps.bbmpgov.in/covid19/mediabulletin.php</a>
<b>To register for vaccination :</b>	<a href="https://selfregistration.cowin.gov.in/">https://selfregistration.cowin.gov.in/</a>
<b>BBMP COVID19 Dashboard:</b>	<a href="https://apps.bbmpgov.in/covid19/">https://apps.bbmpgov.in/covid19/</a>
<b>Follow us on:</b>	 <a href="http://www.facebook.com/bbmp.comm1/">www.facebook.com/bbmp.comm1/</a>
	 <a href="https://twitter.com/BBMPCOMM">twitter.com/BBMPCOMM</a>
	  <a href="https://www.instagram.com/BBMPSplHealth">BBMPSplHealth</a>

Issued by:

Honorable Chief Commissioner, BBMP  
Special Commissioner Health & IT, BBMP  
MD, Bengaluru Smart City Limited

**THANK YOU !**

